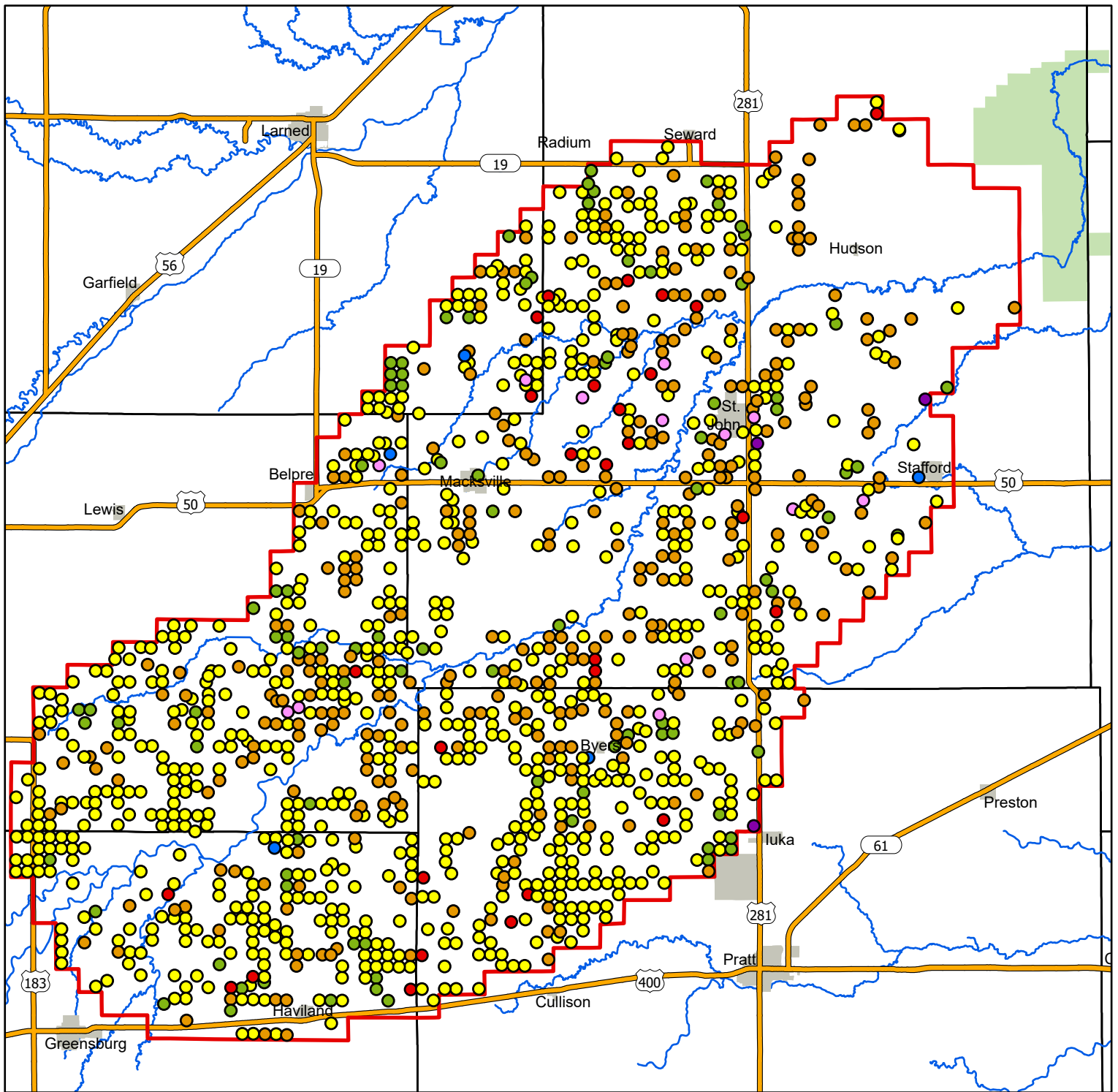


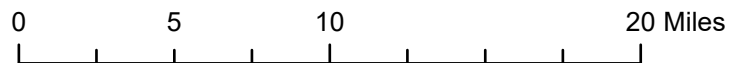
Proposed Administration Allocation as Inches on Reported Acres



Allocation as Inches on Reported Acres

- ≤ 3"
- 3.1 - 6.0"
- 6.1 - 9.0"
- 9.1 - 12.0"
- 12.1 - 15.0"
- 15.1 - 18.0"
- > 18"

- Zone A (>10% Stream Response)
- Quivira National Wildlife Refuge



Kansas Department of Agriculture
 Division of Water Resources
 November 14, 2023