

IN THIS ISSUE:

Outreach Meetings

WTAP Enrollment

Website Updates

Water Quality


Irrigation Technology Initiative

Water Available for Lease Soon

UPCOMING DATES

Outreach Meetings
April 7, 9, 14, 16

District Board Meeting
April 9 @ 7:00 pm



Check Current Weather Conditions Online

Temperature Rainfall Wind Speed

Visit: [GMD5.org/Weather-Stations](https://gmd5.org/Weather-Stations)

BOARD OF DIRECTORS

Joe Schlessiger, Barton County
Kent Moore, Director at Large
Darrell Wood, Edwards County
Tom Taylor, Kiowa County
Kerry Froetschner, Pawnee County
Fred Grunder, Pratt County
Gary Hornbaker, Reno County
Craig Zwick, Rice County
Marlyn Spare, Stafford County

DISTRICT STAFF

Orrin Feril, District Manager
John Hildebrand, Conservation Specialist
Vanessa Marks, Conservation Specialist
Fay Reed, Administrative Assistant

Phone: 620-234-5352
Fax: 620-234-5718
<https://gmd5.org>
Twitter: @bigbendgmd5
Facebook: @bigbendgmd5

GROUNDWATER HI-LITES

April 2026

Big Bend Groundwater Management District No. 5

Outreach Meeting Scheduled

Per K.S.A. 82a-1044 the five groundwater management districts have identified and set reasonable boundaries for areas of concern within their respective areas. The next step is to reasonably address the issues through the development of action plans. At the District's annual meeting, the initial draft action plan for these areas was presented to the public. Since that time, the draft document has been uploaded to the District's website for public distribution. This document is far from finalized and subject to further revision.

The District is seeking input and guidance from the public for the draft action plan. The upcoming outreach meetings will be the next opportunity to ask questions and to provide feedback to the District. See the times and locations for these meetings below. The areas of concern and draft action plan is available on the website (<https://gmd5.org/annual-report>). We encourage all water users in the region to take a good look at this document and let the District know your concerns.

TUESDAY
APRIL
07

9:00 AM
FRONT DOOR
1615 10TH ST
GREAT BEND

1:00 PM
COMM. CENTER
1500 TOLES
LARNED

THURSDAY
APRIL
09

9:00 AM
COUNTY ANNEX
210 E 3RD AVE
ST JOHN

1:00 PM
COUNTY FAIR GRND
1305 NILES AVE
KINSLEY

TUESDAY
APRIL
14

9:00 AM
PRATT MUN. BLDG
117 W 3RD
PRATT

1:00 PM
COMM. BUILDING
720 N BAY ST
GREENSBURG

THURSDAY
APRIL
16

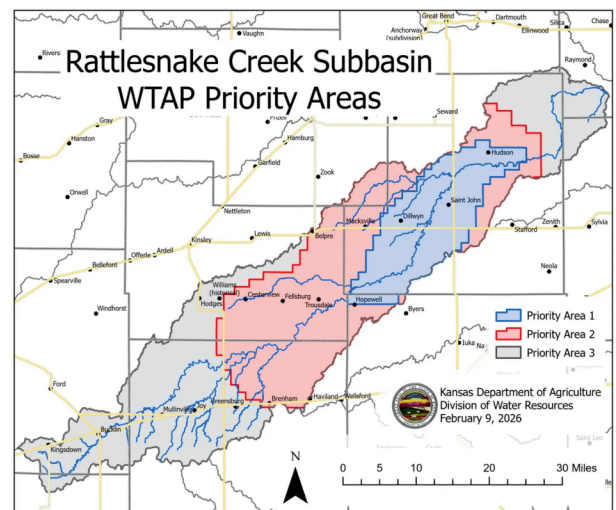
9:00 AM
NAZARENE CHURCH
406 S SHEPARD
SYLVIA

1:00 PM
STUDIO 96
121 S BROADWAY
STERLING

Water Transition Assistance Program

The Water Transition Assistance Program (WTAP) is a voluntary, incentive-based program that helps Kansas landowners permanently retire irrigation water rights in targeted, high-priority areas. The Kansas Department of Agriculture has received a Bureau of Reclamation grant and is currently conducting a WTAP enrollment. Through the program, privately held irrigation water rights are permanently retired in exchange for payment by the State of Kansas, with priority given to rights that provide the greatest beneficial impact to local streams and aquifers in the most critical hydrologic zones. WTAP supports long-term groundwater conservation, protects streamflows, and offers producers a practical pathway to transition from irrigated to dryland farming while strengthening the sustainability of Kansas agriculture.

The Water Transition Assistance Program (WTAP) enrollment period is now open and operates as a competitive bid process. Application materials are available for landowners interested in participating at (<https://gmd5.org/wtap-rattlesnake-creek>) Eligible applicants may receive up to \$6,000 per acre-foot of Historic Consumptive Water Use (HCWU) associated with their water rights. Where available, additional federal or local funding may be combined to further enhance the total incentive payment. The deadline for this spring enrollment is **March 30, 2026**, so interested landowners are encouraged to submit their applications promptly.



Website Updates

At Big Bend Groundwater Management District No. 5, we are committed to helping water users stay informed and proactive in managing their water use. The District's website has recently been updated with two new tools and a redesign of an existing tool to support that effort. The first is the new flowmeter calculator (<https://gmd5.org/flowmeter-calculator>) that helps water users estimate total water use throughout the irrigation season and monitor progress toward their authorized quantities. The other new tool is the interactive groundwater data portal (<https://gmd5.org/portal>) that allows users to explore groundwater data and related information across Central Kansas. The final tool on the website is the weather station dashboard (<https://gmd5.org/weather-stations>). This dashboard has been available for many years, but due to circumstances beyond our control, voice communications are soon going to be unavailable.

These tools are newly developed and may be updated or refined as improvements are made. While the District exercises great care in compiling and presenting this information, Big Bend Groundwater Management District No. 5 makes no warranties, expressed or implied, regarding the accuracy, reliability, or completeness of the data provided.

Water Quality

In Central Kansas, water availability is less of an issue as it is in other portions of the High Plains Aquifer. However, water quantity does not mean much if the quality of that water makes it unusable. As a service to water users in Central Kansas, the District provides free water sampling and analysis for specific water constituents. The District supplies water bottles, instructions for proper sample collection, and analysis at no cost to the water user. The District's water analysis laboratory is not KDHE-certified, but does provide quick and cost efficient assessment of water quality within the region. The District's water laboratory can analyze for chloride and nitrate concentrations.

Irrigation Technology Initiative

The District still has funds available through the Irrigation Technology Initiative (ITI), which includes two parts: system evaluation and cost share.

1. System Evaluation – An irrigation engineer will evaluate your complete irrigation system to provide to the producer a better understanding of their irrigation system's efficiency. These evaluations identify issues that may be reducing performance. To get started, simply complete the onboarding steps and an irrigation engineer will be in contact to conduct the evaluation. Once submitted, eligible water users may receive compensation.

2. Cost Share – Based on the results of the system evaluation, irrigators can apply for cost share to make recommended system improvements. The program provides up to \$3,500 per system and up to \$7,000 per entity, ensuring more producers can benefit.

The ITI is open to any irrigator within District boundaries and is awarded on a first-come, first-served basis. Funding is made possible in part by the State of Kansas Water Plan Fund and is limited, so don't wait to apply. Additional details can be found at: (<https://gmd5.org/irrigation-technology>).

Stay connected to [CKWBA.org](https://www.ckwba.org). Water will soon be available for lease to eligible regions.

Do we have your correct mailing address?

Let us know at 125 S. Main St., Stafford, Kansas 67578 or call 620-234-5352.